



**Staunton Augusta  
Waynesboro**  
Metropolitan Planning  
Organization

# WWRC/US 250 Transportation Study Fishersville, Virginia June 22, 2017



# STUDY PARTNERS



**Staunton Augusta  
Waynesboro**

Metropolitan Planning  
Organization



Augusta County



**Wilson Workforce and  
Rehabilitation Center**

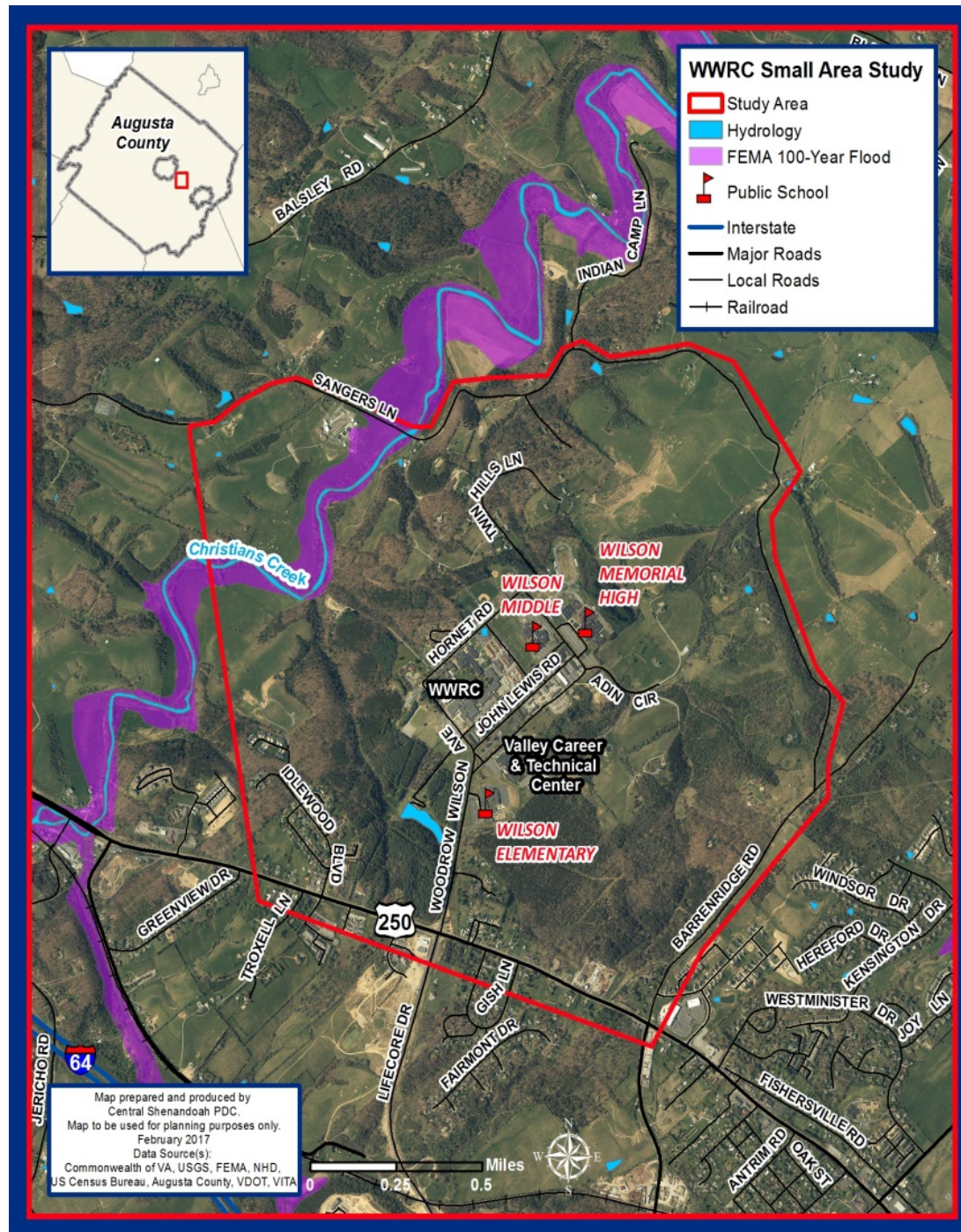


**TIMMONS GROUP**



**AUGUSTA  
COUNTY  
PUBLIC  
SCHOOLS**

# STUDY AREA



# STUDY GOALS

1. Improve safety and reliability in the study area on US 250 and Woodrow Wilson Avenue
2. Explore opportunities for secondary access to the WWRC Complex
3. Identify context-sensitive access management strategies for US 250 in the study area
4. Define a project for future funding

# STUDY SCHEDULE (2017)

TASK	March	April	May	June	July	Aug	Sept	Oct	Nov	Dec
Task 1.0 Develop Inventory & Existing Conditions	Study Scoping Traffic Counts									
Task 2.0 Develop Future Conditions Data										
Task 3.0 Data Analysis										
Task 4.0 Community Involvement				Public Open House					Final Public Open House	
Task 5.0 Develop Study Recommendations										
Task 6.0 Deliverables										Final Report Presented to SAWMPO Policy Board

# Contact Information

---

Ann Cundy, AICP

Transportation Program Manager, Staunton Augusta Waynesboro MPO  
ann@cspdc.org, 540-885-5174

Leslie Tate

Planner II, Augusta County Community Development  
ltate@co.augusta.va.us, 504-245-5700

Adam Campbell

Assistant District Planner, Virginia Department of Transportation (VDOT)  
AdamF.Campbell@vdot.virginia.gov, 540-332-9067