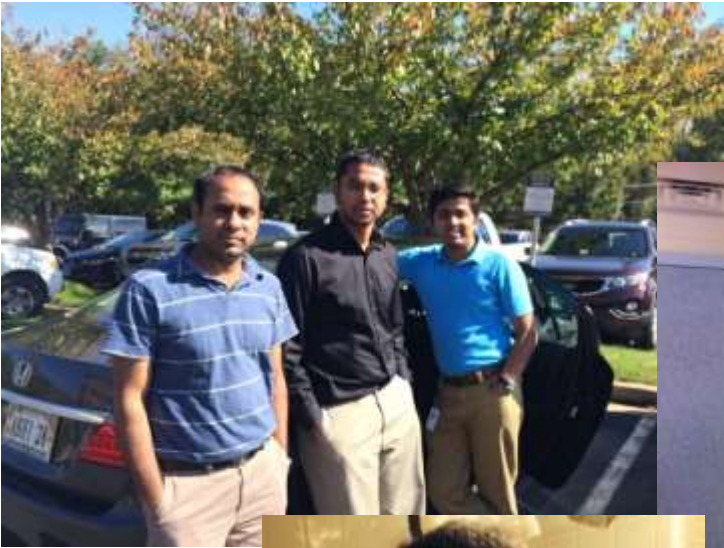




RideShare: It's nice to share!

A program of the Thomas Jefferson Planning District
Commission in cooperation with the Central
Shenandoah Planning District Commission

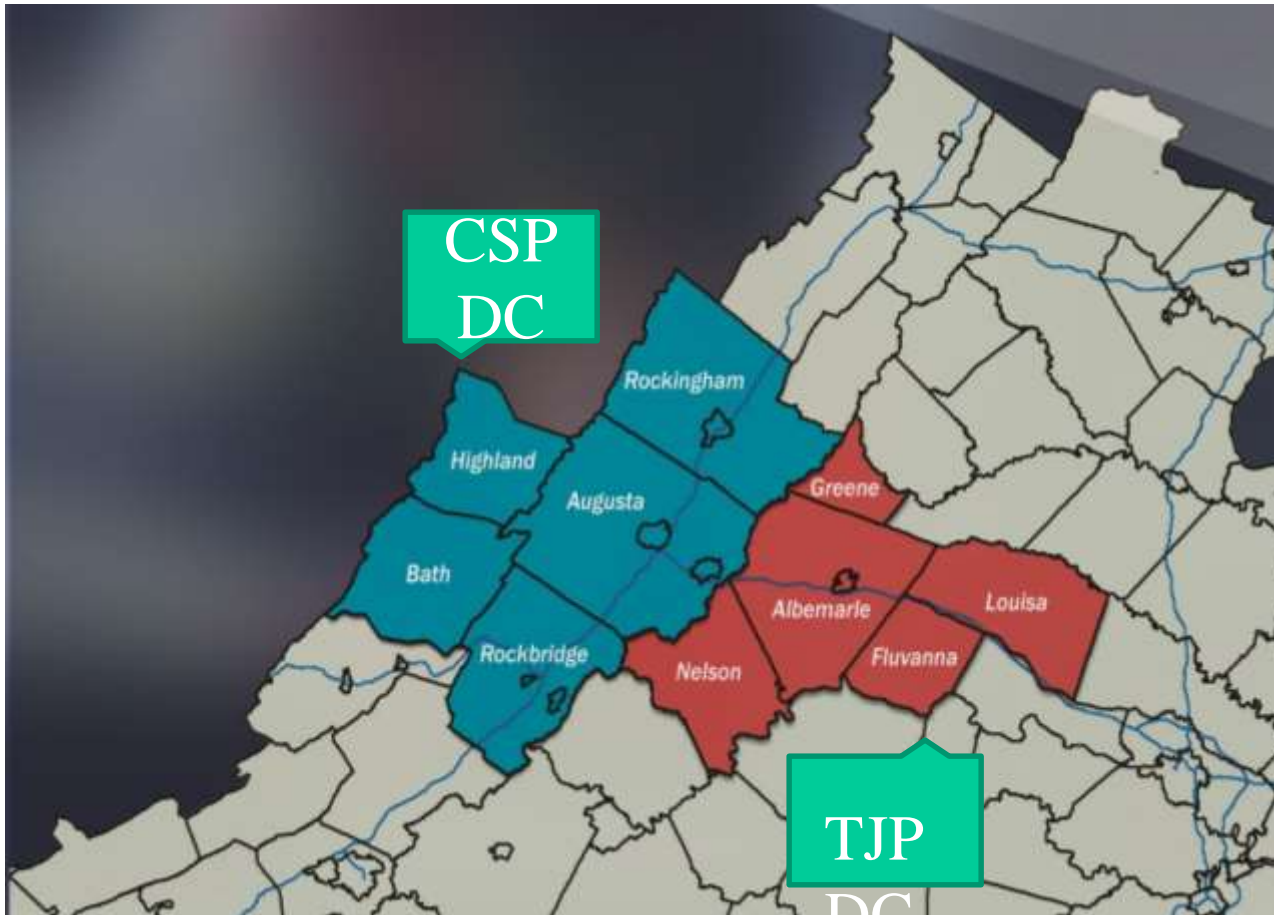




Introduction

- RideShare works to help reduce traffic congestion by decreasing the number of single occupant vehicles
- A program of the TJPDC
- Expanded to CSPDC in 2009
- Serves anyone commuting into or out of the TJ Planning District (City of Charlottesville, Counties of Albemarle, Fluvanna, Greene, Louisa, Nelson) and Central Shenandoah Planning District (Counties of Augusta, Bath, Highland, Rockbridge, and Rockingham, and the Cities of Buena Vista, Harrisonburg, Lexington, Staunton, and Waynesboro)

RideShare Coverage Area

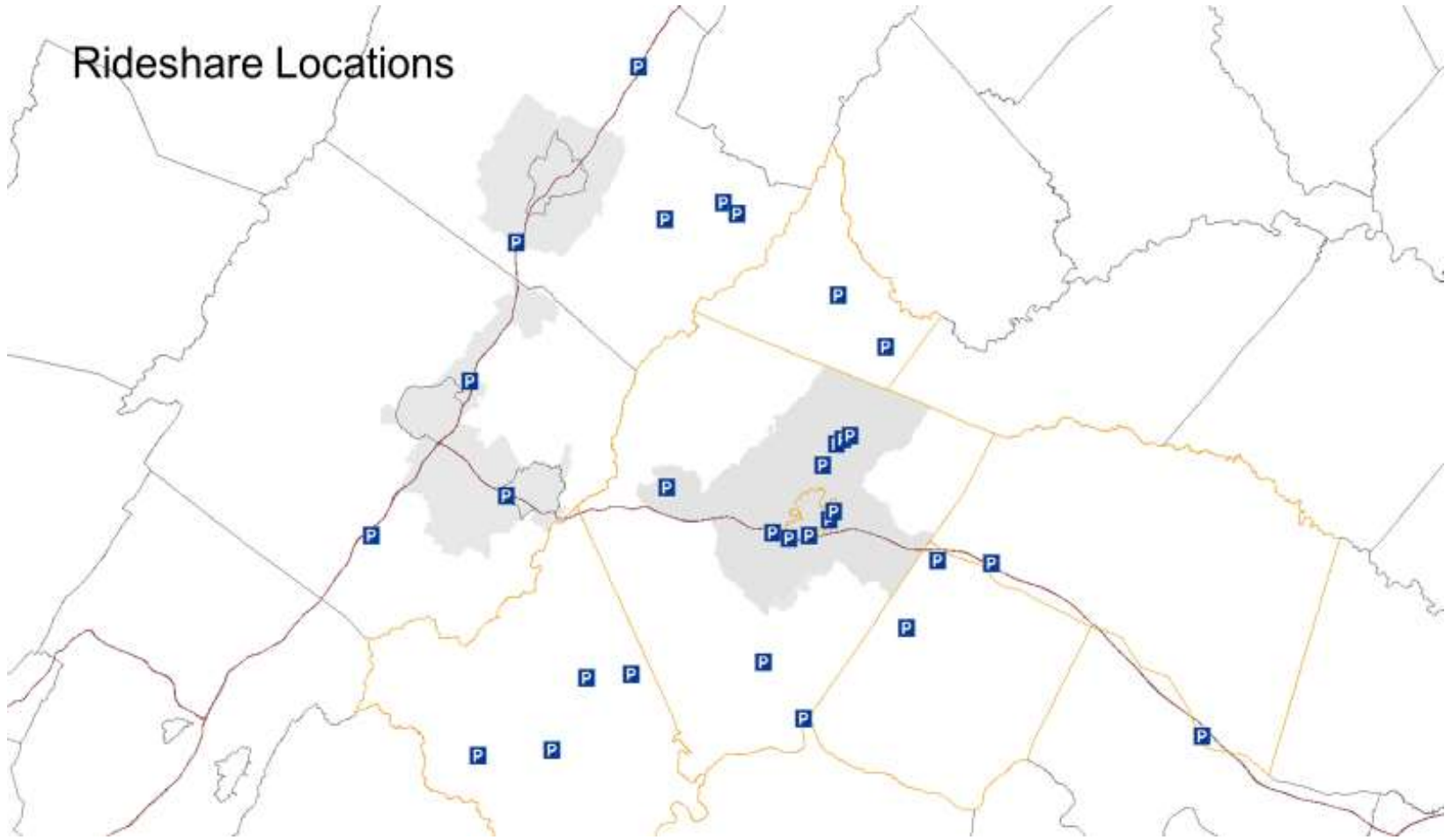




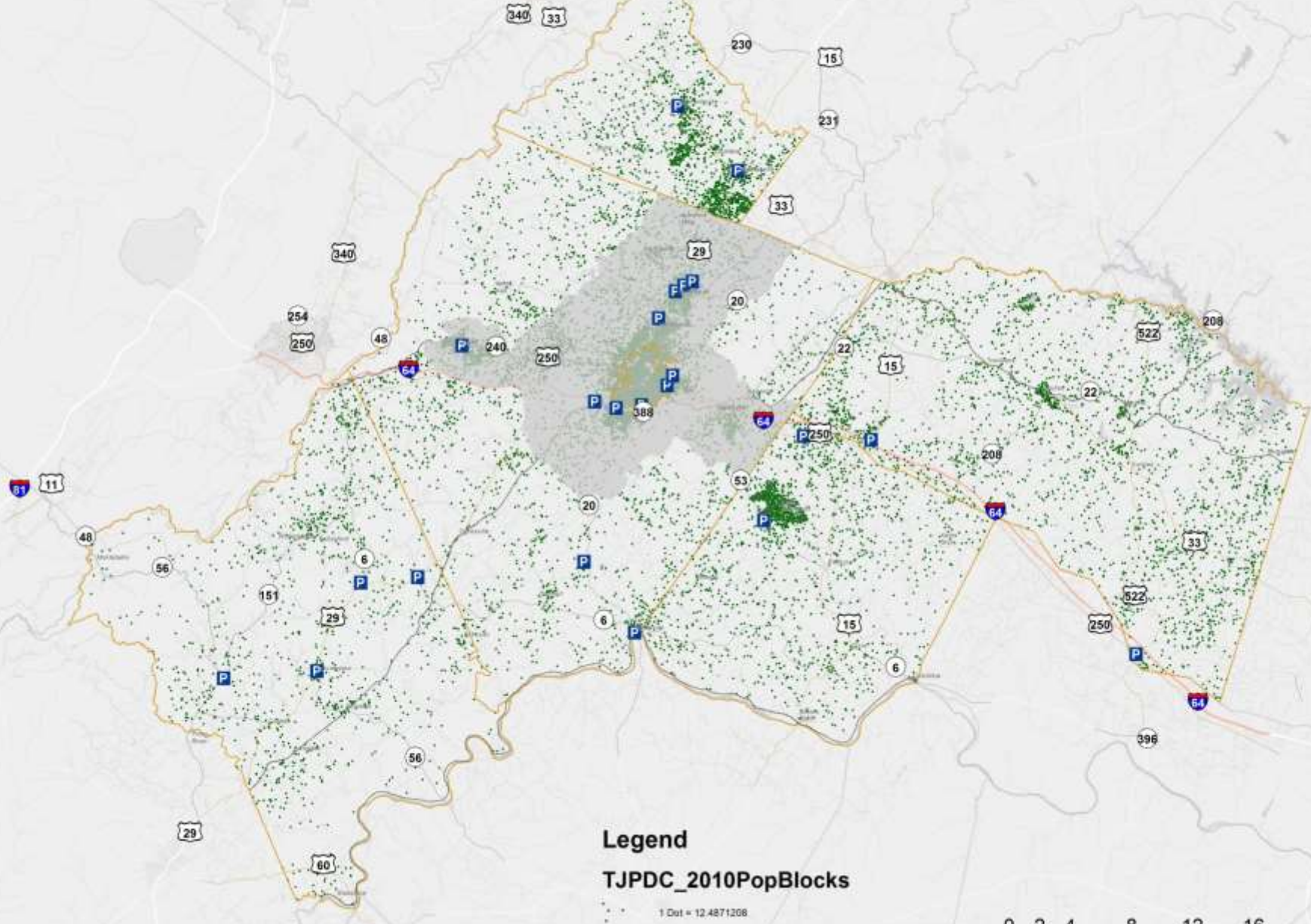
Services

- Car/vanpool matching
- SchoolPool
- Guaranteed Ride Home Program
- Park and Ride lot information & marketing
- Transportation referral for the region (Commuter Information toll-free number and website)
- Employer services

Rideshare Locations



Park & Ride Lots & Pop. Density

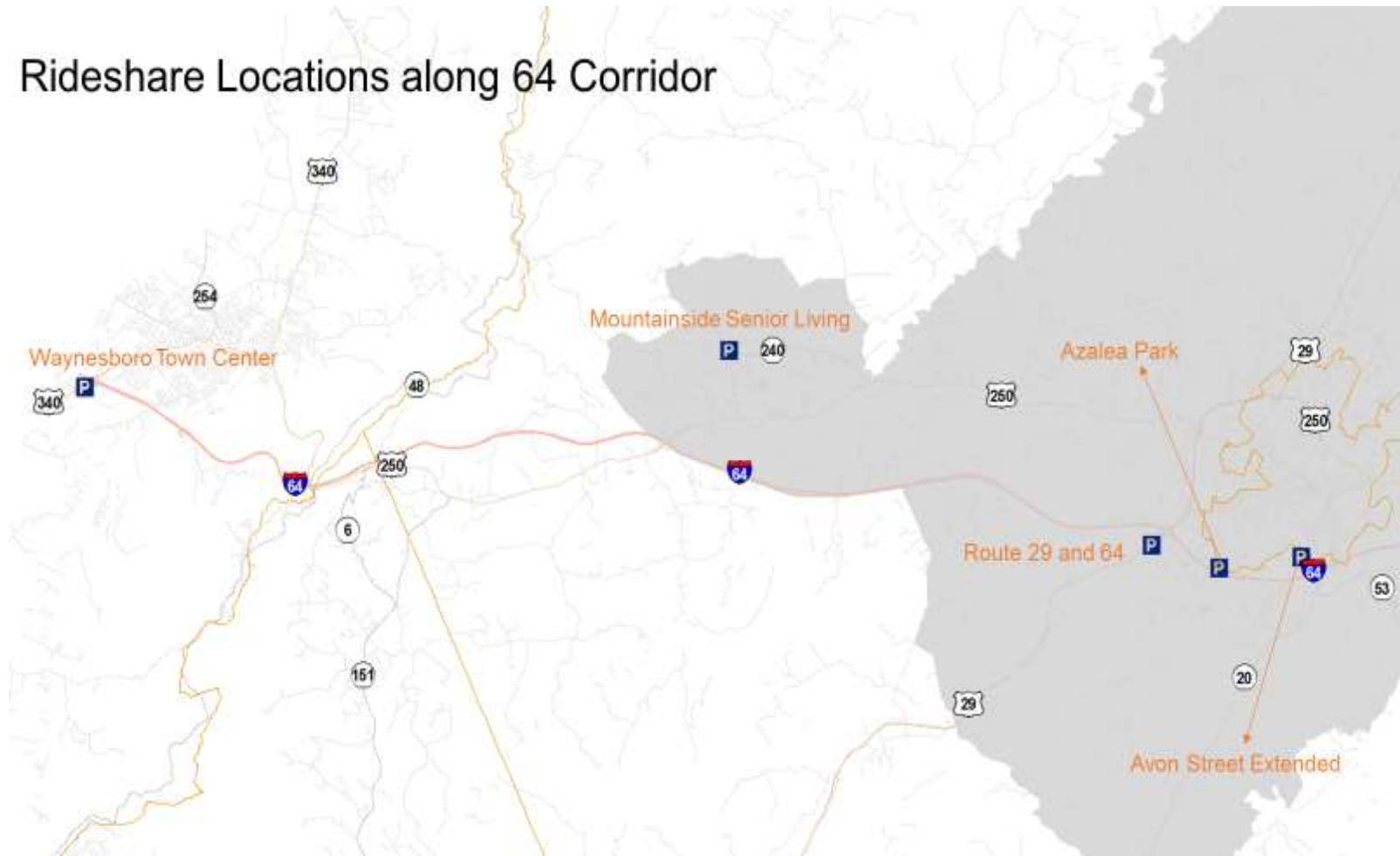


Legend
TJPDC_2010PopBlocks
1 Dot = 12,487,1208
P0010001

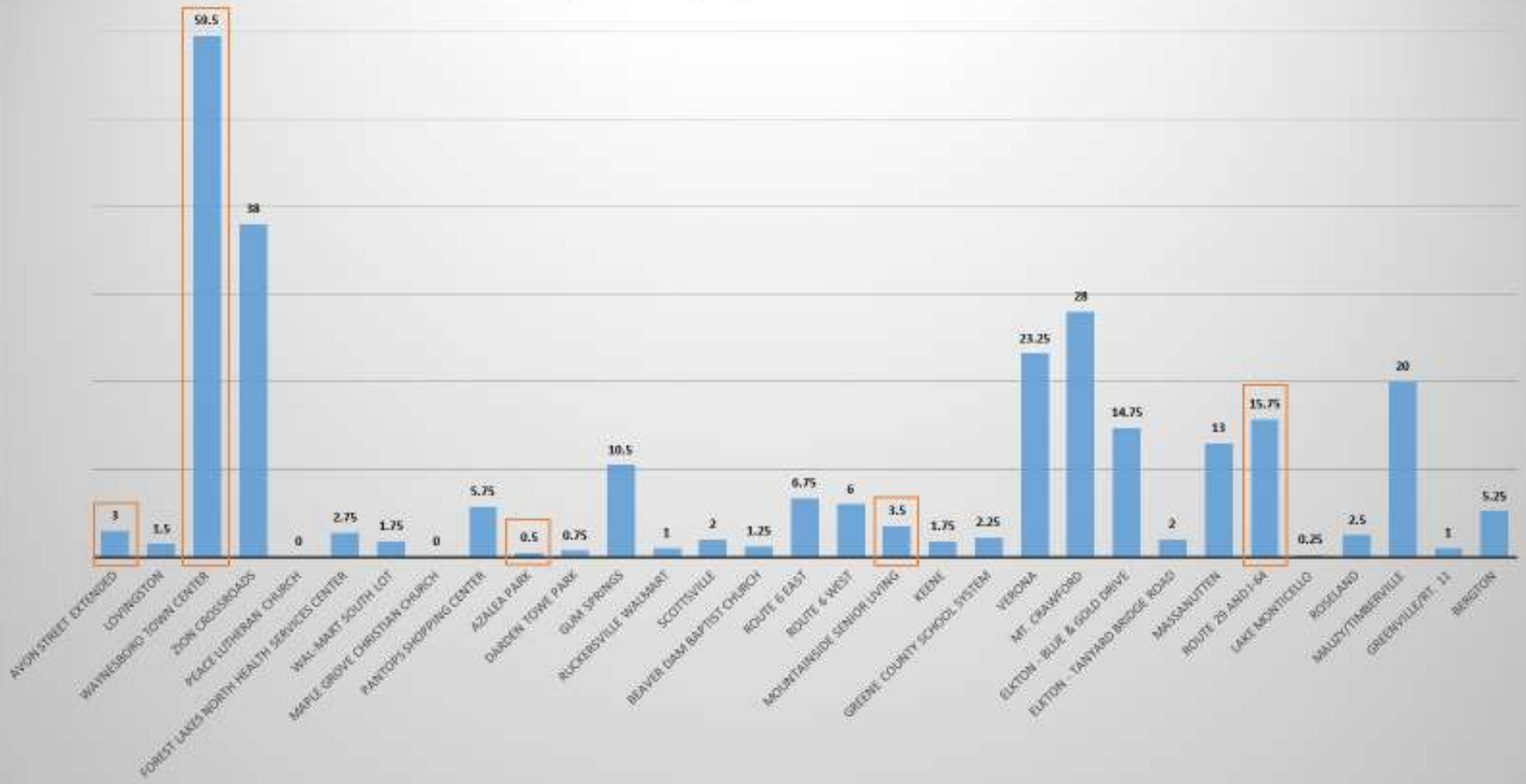


Map: HERE, DeLorme, Mapbox, © OpenStreetMap contributors, and the GIS user community

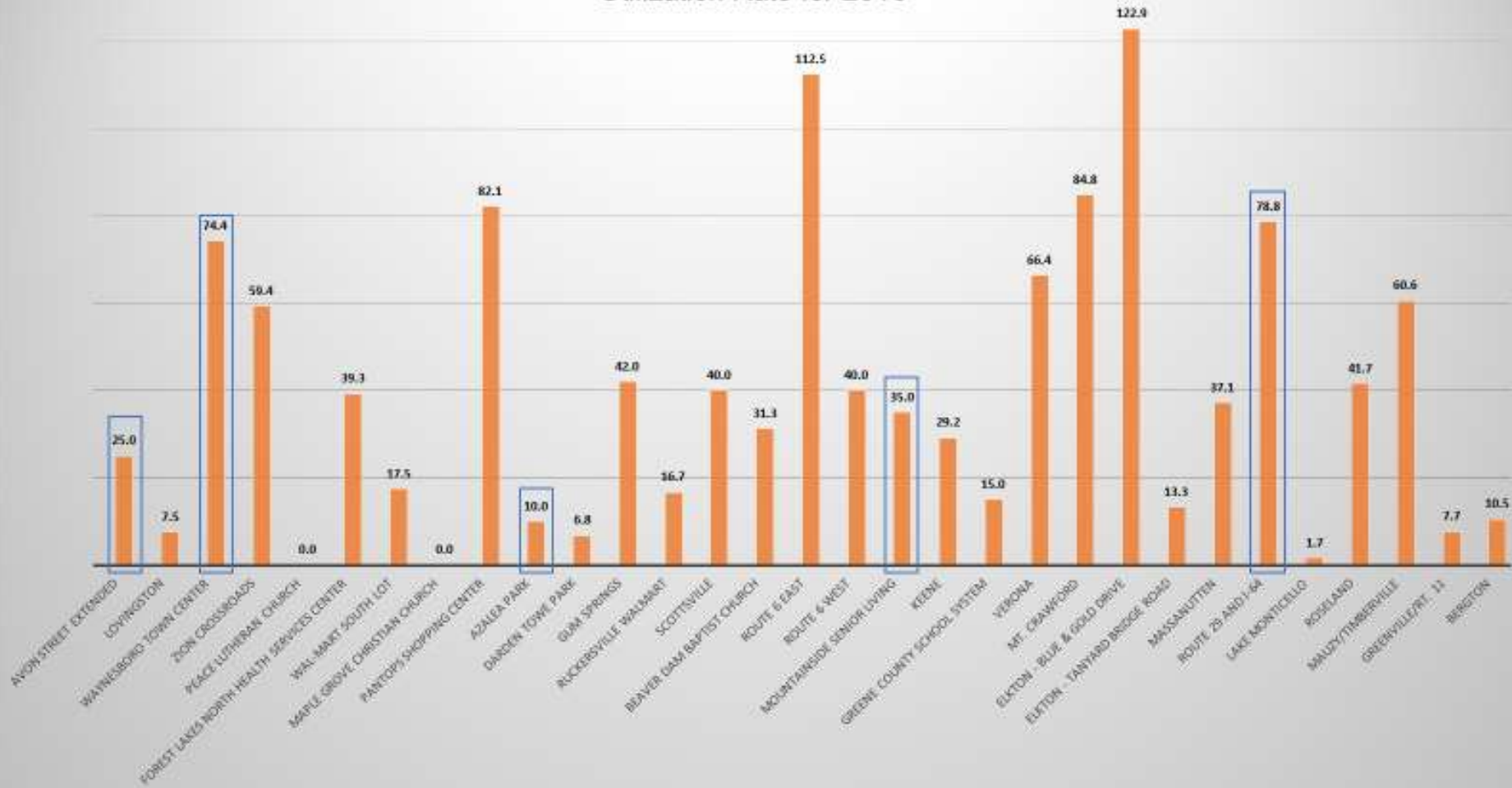
Rideshare Locations along 64 Corridor



Average Parking Spaces Filled for 2016




Utilization Rate for 2016





Find a ride match at www.rideshareinfo.org

 [HOME](#) [LOG OUT](#)

Welcome LISA HORANY
Questions? Call 1-202-962-3333

[SYSTEM ADMIN](#) [EMPLOYER ADMIN](#) [RIDESHARE ADMIN](#) [COMMUTER ADMIN](#) [POOL ADMIN](#) [SPECIAL EVENTS](#) [REPORTS](#)

RIDESHARE ADMINISTRATION

- FIND A RIDEMATCH
- VIEW RIDEMATCH HISTORY
- ADD NOTES


RIDESHARE ADMINISTRATION - RIDEMATCH RESULTS

MATCH CRITERIA

Commuter Name:	SIMON HORANY
Starting Address:	106 WESTERLY AVE CHARLOTTESVILLE VA 22903
Destination Address:	1609 UNIVERSITY AVE VA 22903
Radius for Search Criteria:	1 miles around origin and 1 miles around destination.
Work Schedule:	08:00:AM to 05:00:PM
Flexible To Arrive:	60 minutes before or 60 minutes after
Flexible To Leave:	60 minutes before or 60 minutes after

[VIEW MAP](#) [VIEW MATCH LIST](#) [VIEW / EMAIL MATCH LETTER](#) [VIEW DIRECTIONS](#) [MODIFY SEARCH](#)

RIDEMATCH MAP





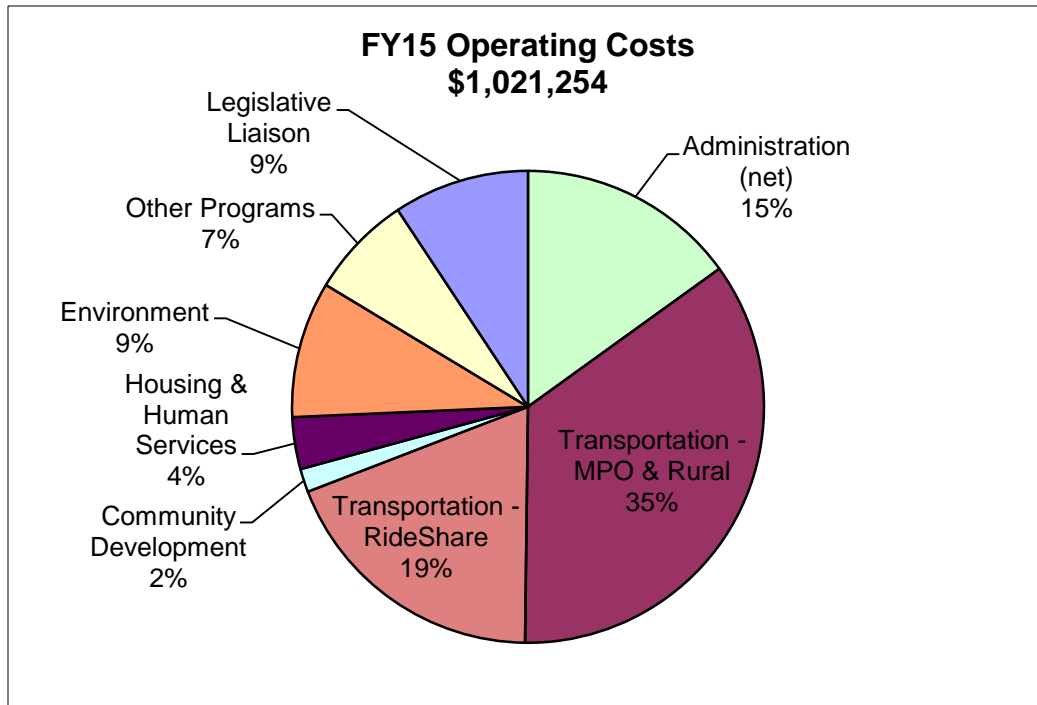
Use by Locality

- Active Data Base Registrants – 518 total
A - 126, C – 67, F - 42, G - 15, L - 25, N – 11
- Waynesboro/Staunton- 80
- CSPDC area- 145
- Average match rate is 51%
- Guaranteed Ride Home Registrants – 175 Total
A - 31, C – 31, F - 8, G - 10, L - 10, N – 10
- If everyone opted to carpool just one day a week, the traffic on the nation's major highways and roads would be reduced by as much as 20%.



A Major TJPDC Program

RideShare is part of the transportation program, which makes up the majority of TJPDC's Operating Budget. The RideShare program accounts for 19% of TJPDC operations.



RideShare Funding for FY15

DRPT Grant	\$137,200
Charlottesville	\$7,013
Albemarle County	\$15,892
Fluvanna County	\$4,098
Greene County	
Louisa County	\$5,276
Nelson County	\$2,380
Total	\$171,859

Grant for FY16 = \$139,258

Thank You!



Please visit www.rideshareinfo.org or contact RideShare for ways to reduce your transportation footprint!